

Pegasus 2



2x Digital

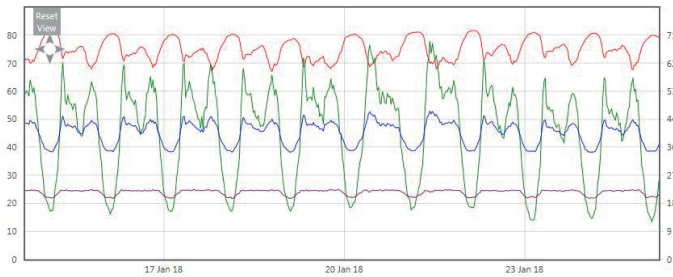
2x Digital	2x puls uni sau bidirecțional. Moduri de numărare sau de înregistrare a evenimentelor
2x intrări analogice (al treilea canal suplimentar disponibil la cerere)	Traductor de presiune intern. Presiunea externă. 4-20mA (opțional). 0-20 bar / 0-200 metri cap / 0-300 psig, 0,1% repetabilitate / vă rugăm să rețineți că loggerul este calibrat la 10 bar ca standard. (Calibrarea la 20 de bari trebuie specificată la momentul comenzii, dacă este necesar) Zgomot de pierdere, 0-10V, 0-1V, temperatură sau 4-20 mA

3x ieșiri solenoide

3x ieșiri solenoide	1x Latching Solenoid, to vent or close the top PRV chamber.
	2x Pulsed Solenoid outputs, up/down control.
	Safe levels and alerts set to protect battery depletion.

Mobile

Mobile	Cellular modem supporting 2G/3G/4G/NBLoT/LTE-M (Cat-1) - contact HWM for available options
Serial	RS232 or USB interface for programming and integration with PC/Laptop or Windows Tablet using IDT software. Programmable up to 19,200 b.p.s



All images, text and designs are protected by international and UK copyright law and remain the property of HWM. It is against the law to copy or use any of the content from HWM website or literature without the written consent of HWM. HWM Ltd. reserve the right to vary the specification.



Summer/Winter

Summer/Winter	Clock is programmable for seasonal time changes
Time Based Control	Up to 96 table entries for 7 individual days per week or setting based on Week Days or Weekends. Calendar special event table also available
Flow Based Control	Flow based control, or Flow override option
Fail Safe	Default Fail Safe can be configured to 'Set' or 'Release' the latching solenoid upon error (e.g faulty sensor/no flow) or revert to time profiles if flow fails or revert to fixed pressure (operator selected)

Frequency

Frequency	Variable logger sample rate from 1s to 24hrs (this may affect battery life and communication costs)
Logger/Site ID	7 alphanumeric characters. Readable factory set serial number in firmware
Ingress Protection	IP68 fully submersible
Dimensions	315H x 153W x 87D mm (12.4" x 6.0" x 3.4")
Construction	Aluminium alloy casing
Weight	Approx 3.5kg
Operating Temp.	-20 to +60°C (-5 to +140°C)
Power	Lithium-thionyl chloride cell operational for 5 years under typical operating conditions
Alarms	Multiple alarm options including Rate of Change, Profile, Minimum Night Flow and Threshold. 16 alarms per logger. Can be programmed to auto dial up to 8 telephone numbers on alarm. Over 16 alarms per logger depending on channel configuration
Memory	Primary recording 179,760 readings (Cyclic or Block)

HWM Water Limited

Ty Coch House
Llantarnam Park Way
Cwmbran
NP44 3AW
United Kingdom

Tel: +44 (0) 1633 489 479
Fax: +44 (0) 1633 877 857
Email: sales@hwm-water.com
Web: www.hwmglobal.com

MONITORING ASSETS, DELIVERING DATA, BRINGING CONTROL